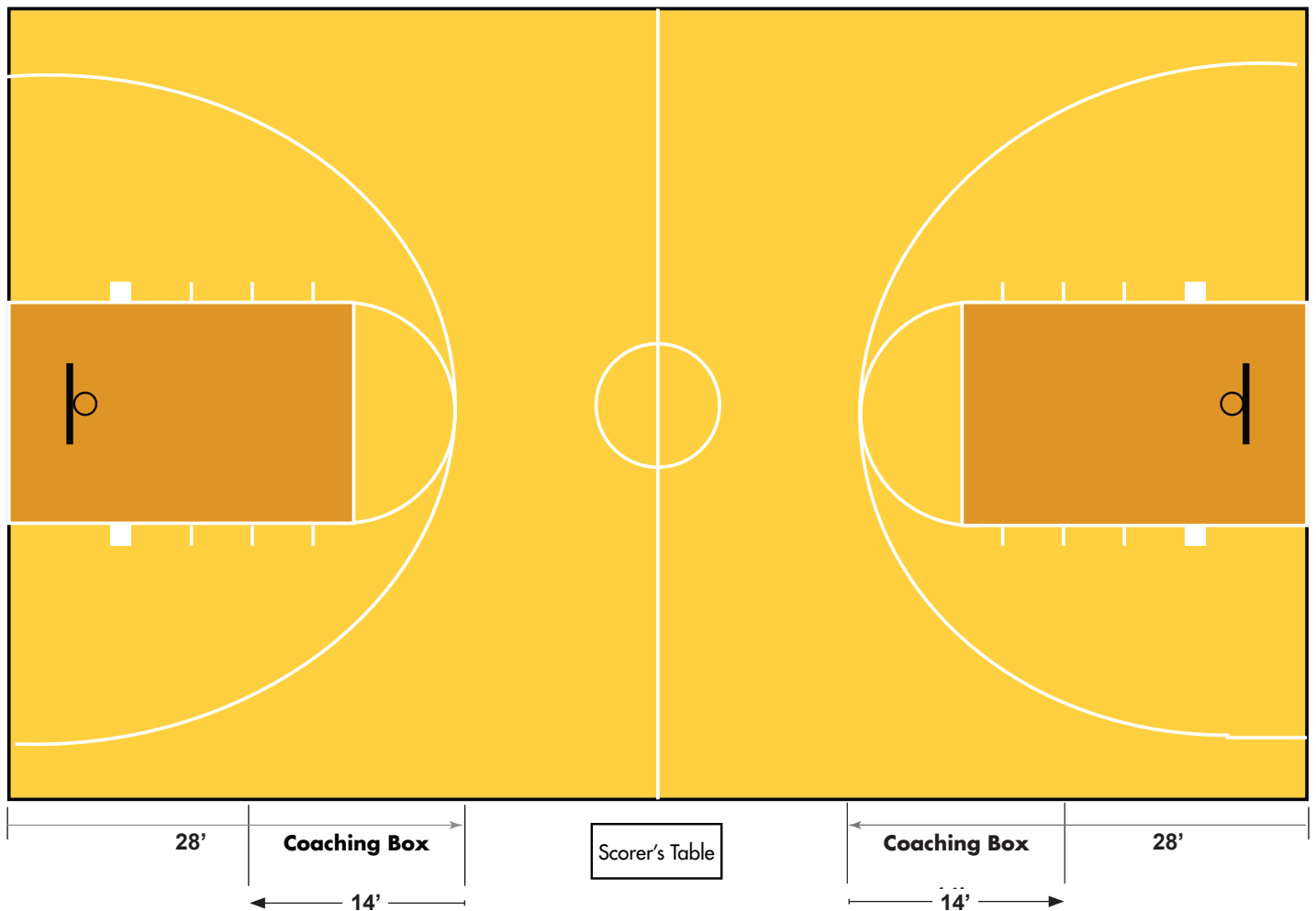


Coaching Box

Rule 1-13-2

The coaching box shall be outlined outside the side of the court on which the scorer's and timer's table and team benches are located. The area shall be bounded by a line 28 feet from the end line, the sideline, a line no more than 14 feet from the 28-foot line toward the end line, and the team bench. These lines shall be located off the court, be 2 inches wide.



Simple steps to create a coaching box.

1. Starting at the endline on the side of the team bench, measure 28 feet toward the scorer's table.
2. Place a 2-inch tape on the floor, off the playing surface.
3. Measure 14-feet from this line toward the end line.
4. Place a 2-inch tape on the floor, off the playing surface
5. Repeat above four steps in front of the other team's bench.